
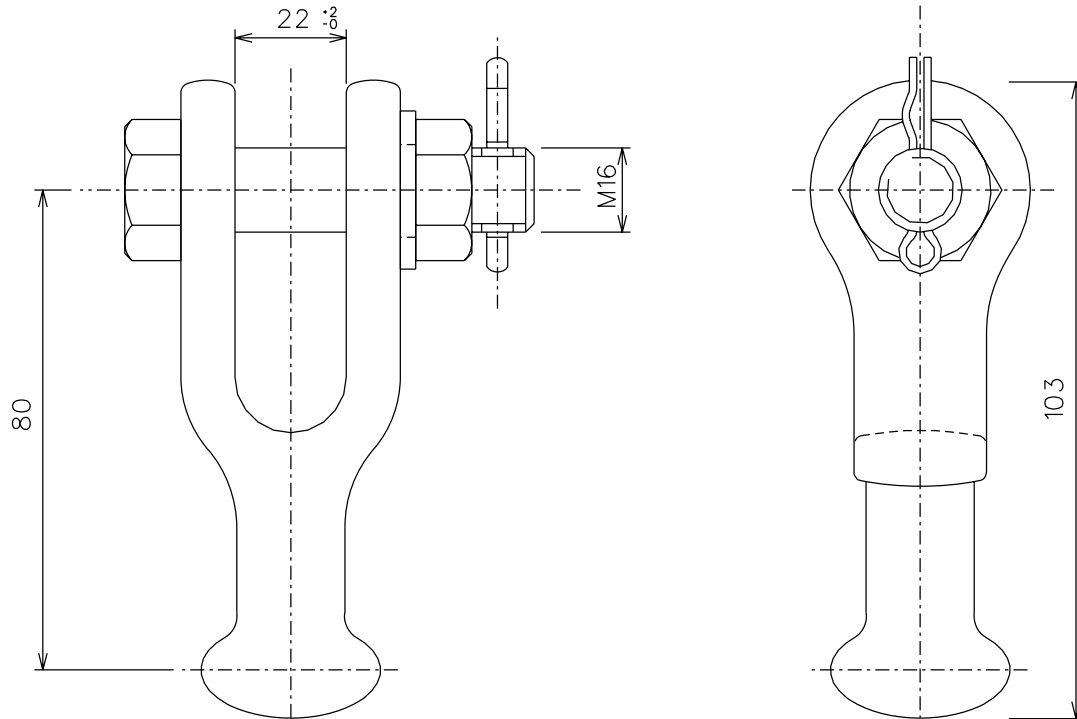


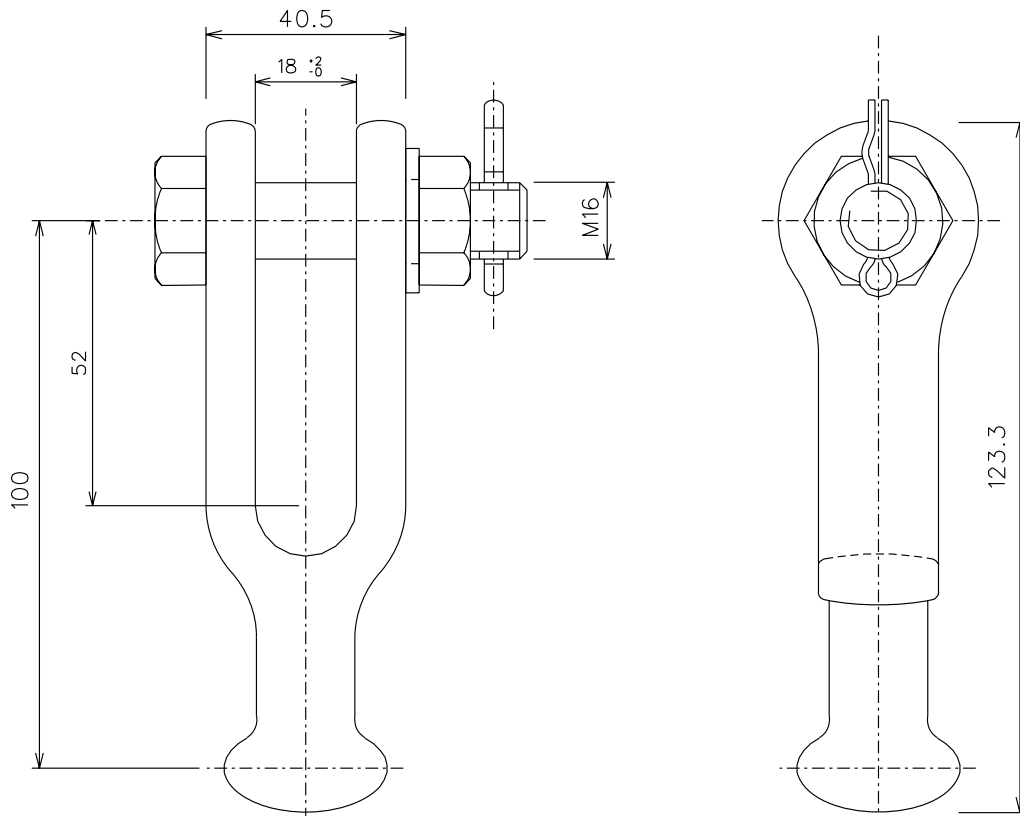
NOTE :
DRAWING NOT FOR MANUFACTURING PURPOSES.

SAP MATERIAL No.:		0167508											
SHORT DESCRIPTION:		CLEVIS-BALL 16mm 16L 80CL 120kN D6059											
TECH. DESCRIPTION:													
CLEVIS-BALL * BOLT TYPE * MATERIAL : DROP FORGED STEEL *													
HOT DIPPED GALVANISED * CLEVIS OPENING : 18mm *													
BALL DIMS : TO SANS 60120 DESIGNATION 16 *													
CLEVIS DIMS : TO SANS 60471 DESIGNATION 16L *													
NOMINAL COUPLING LENGTH : 80mm * MINIMUM FAILING LOAD : 120kN *													
SUPPLIED COMPLETE WITH													
1 x M16x75 CLEVIS BOLT ASSEMBLY (D-DT-7043) *													
ESKOM DRAWING No. D-DT-6059 *													
ITEM		:- CLEVIS-BALL 16mm 120kN											
MATERIAL SPECIFICATION		:- BS 970 1,2,3											
CORROSION SPECIFICATION		:- SANS 121											
STANDARD SPECIFICATION		:- SANS 61284,SANS 60471, SANS 60120											
ESKOM SPECIFICATION		:- TRMSCAAH2, DSP 34-1667											
TEST & CERTIFICATION REQUIREMENTS		:- TYPE TEST ACCORDING TO SANS 61284 AND DSP 34-1667											
INSPECTION		Yes		No		ESKOM RELEASE NOTE				Yes		No	
IDENTIFICATION:- INDELIBLE MANUFACTURES TRADEMARK & PART No. ON ALL ITEMS													
9	CLEVIS BOLT LENGTH CORRECTED					P.A.T.	S. MASHABA	L.CHRISTIAANS	05.02.2010				
8	SAP 0222125 DESIGNATION CORRECTED FROM 16L TO 19L					P.A.T.	S.MASHABA	S.MASHABA	05.02.2010				
7	SHORT DESCRIPTION CHANGED					P.A.T.	S.MASHABA	B.BRANFIELD	03.12.2009				
REV	REVISION DESCRIPTION					BY	CHKD	AUTH	DATE	REF. DRAWINGS			
AUTH:	PHIL CROWDY		DATE:	12/96	SCALE					SAP No:			
					NTS								
CHKD:	C.B. CLARK		DATE:	12/96	CAD REF:		D-DT-6059			0167508			
					SERIES 6059					SET		SHEET	REV
DRAWN:	J.F.SCHOLTZ		DATE:	10/96	FILE No:					3	1	9	
					6059								




NOTE :
DRAWING NOT FOR MANUFACTURING PURPOSES.

SAP MATERIAL No.:		0222125					
SHORT DESCRIPTION:		CLEVIS-BALL 16mm 19L 80CL 120kN D6059					
TECH. DESCRIPTION:							
CLEVIS-BALL * BOLT TYPE * MATERIAL : DROP FORGED STEEL *							
HOT DIPPED GALVANISED * CLEVIS OPENING : 22mm *							
BALL DIMS : TO SANS 60120 DESIGNATION 16 *							
CLEVIS DIMS : TO SANS 60471 DESIGNATION 19L *							
NOMINAL COUPLING LENGTH : 80mm * MINIMUM FAILING LOAD : 120kN *							
SUPPLIED COMPLETE WITH							
1 x M16x75 CLEVIS BOLT ASSEMBLY (D-DT-7043) *							
ESKOM DRAWING No. D-DT-6059 *							



NOTE :
DRAWING NOT FOR MANUFACTURING PURPOSES.

SAP MATERIAL No.:		0222124						
SHORT DESCRIPTION:		CLEVIS-BALL 16mm 16L 100CL 120kN D6059						
TECH. DESCRIPTION:								
CLEVIS-BALL * BOLT TYPE * MATERIAL : DROP FORGED STEEL *								
HOT DIPPED GALVANISED * CLEVIS OPENING : 18mm *								
BALL DIMS : TO SANS 60120 DESIGNATION 16 *								
CLEVIS DIMS : TO SANS 60471 DESIGNATION 16L *								
NOMINAL COUPLING LENGTH : 100mm * MINIMUM FAILING LOAD : 120kN *								
SUPPLIED COMPLETE WITH								
1 x M16x75 CLEVIS BOLT ASSEMBLY (D-DT-7043) *								
ESKOM DRAWING No. D-DT-6059 *								
9	CLEVIS BOLT LENGTH CORRECTED			P.A.T.	S. MASHABA	LCHRISTIAANS	05.02.2010	
8	SAP 0222125 DESIGNATION CORRECTED FROM 16L TO 19L			P.A.T	S.MASHABA	S.MASHABA	05.02.2010	
7	SHORT DESCRIPTION CHANGED			P.A.T	S.MASHABA	B.BRANFIELD	03.12.2009	
REV	REVISION DESCRIPTION			BY	CHKD	AUTH	DATE	REF. DRAWINGS
AUTH:	PHIL CROWDY	DATE:	12/96	SCALE	 D-DT-6059		SAP No:	
				NTS				
CHKD:	C.B. CLARK	DATE:	12/96	CAD REF:			0222124	
				SERIES 6059				
DRAWN:	J.F.SCHOLTZ	DATE:	10/96	FILE No:				
				6059			SET	SHEET
							3	3
								9